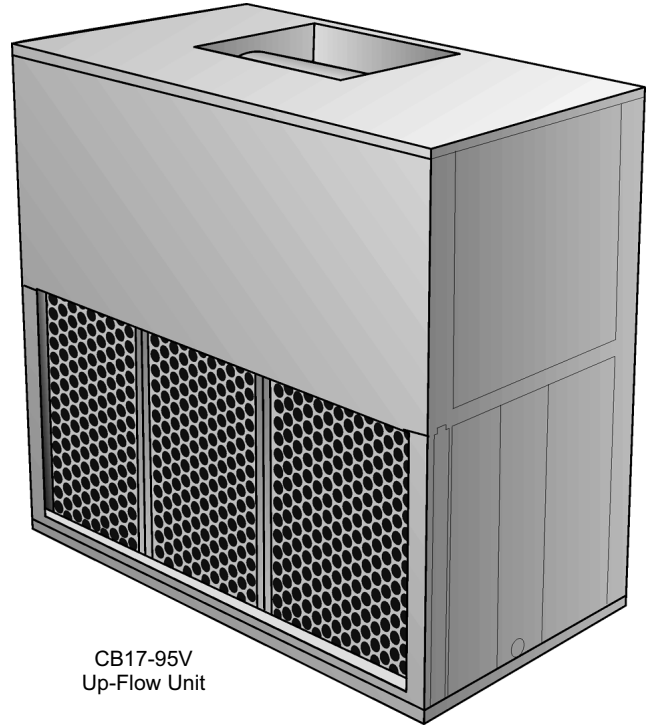


CBH17-95V
Horizontal Unit



CB17-95V
Up-Flow Unit

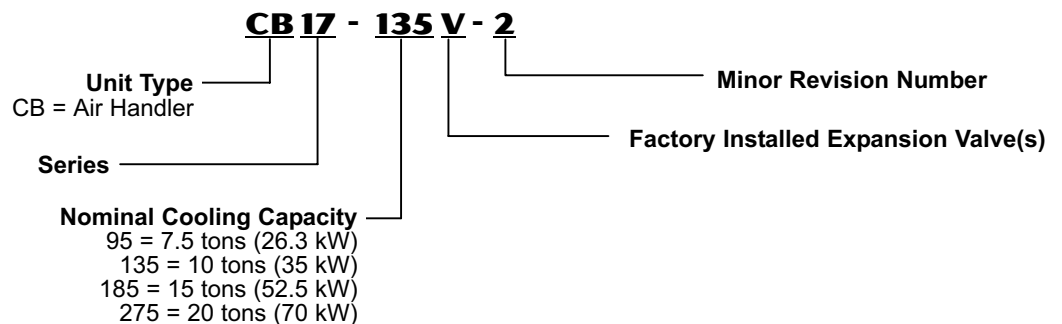


**7.5 to 20 Tons
Optional Hot Water Coil Heating Capacity - 120,000 to 500,000 Btuh
Optional Electric Heat - 10 to 60 kW**

CONTENTS

Accessory Air Resistance	Page 7	Hot Water Coil Heating Capacity Curves	Page 17-18
Blower Data	Page 6	Hot Water Coil Pressure Drop	Page 7
Dimensions	Pages 11-16	Installation Clearances	Page 8
Drive Kit Selection	Page 5	Model Number Identification	Page 1
Electric Heat Data	Pages 8-10	Optional Accessories	Pages 2-3
Features	Page 2	Specifications	Page 4
Grille Throw Data	Page 7		

MODEL NUMBER IDENTIFICATION



NOTE - Specifications, Ratings and Dimensions subject to change without notice and without incurring liability. Improper installation, adjustment, alteration, service or maintenance can cause property damage or personal injury. Installation and service must be performed by a qualified installer and servicing agency.

FEATURES

Application

- Provides installation versatility and maximum efficiency in cooling performance, air handling and filtering in cooling or heat pump applications.
- Available in two model styles, up-flow supply air discharge (CB17) or horizontal supply air discharge (CBH17).
- Equipped with multi-circuit evaporator coils, suitable for application with 6 to 20 ton HS29 air conditioners or 7.5 to 10 ton HP29 heat pump outdoor units.
- Each indoor coil circuit has a separate expansion valve and distribution system for two stage capacity control during cooling cycles.
- Air handlers are shipped factory assembled ready to install. Blower drives are shipped separately and must be ordered extra.

Approvals

- Tested with matching air conditioners and heat pump units in accordance with the ULE certification program, which is based on ARI Standard 340/360-2000.
- Units and components within are bonded for grounding to meet safety standards for servicing required by CSA, NEC and CEC.
- Units manufactured in accordance with ISO 9001 quality standards.

Equipment Warranty

- All covered components have a limited warranty for one year.

Cabinet

- Cabinet is constructed of heavy-gauge, pre-painted, galvanized steel.
- Cabinet is completely lined with thick fiberglass insulation resulting in quiet and efficient operation due to the excellent sound deadening and insulating qualities of fiberglass.
- Large removable panels provide complete service access.
- Electrical inlets are conveniently located in the cabinet.

Multi-Circuit, Copper Tube Coil

- Extra large surface area of coil provides maximum cooling efficiency, excellent heat transfer and low air resistance.
- Coil is face split with separate circuits, each circuit has its own expansion valve.
- Precise circuiting gives uniform refrigerant distribution.
- Coil is constructed of precisely spaced lanced aluminum fins fitted to durable seamless, rifled copper tubes.
- Rifled tubing provides superior refrigerant flow resulting in maximum heat transfer.
- Fins are strengthened to resist bending and are equipped with collars that grip tubing for maximum contact area.
- Flared tubing connections and silver soldering provide tight, leakproof joints.
- Long life copper tubing is corrosion-resistant and easy to field service.
- Coil is thoroughly factory tested under high pressure to ensure leakproof construction.

Drain Pan

- Deep, corrosion resistant drain pan is constructed of heavy gauge galvanized steel.
- Equipped with a drain connection on each side of the cabinet for installation versatility.

Belt Drive Blowers

- -95V models are equipped with a single blower wheel, -135V, -185V and -275V models have dual blower wheels.
- Centrifugal belt driven blowers deliver large air volumes quietly and with low power consumption.
- Blower wheels are heavy-duty, with forward curved blades and double inlet.
- Wheels are statically and dynamically balanced to eliminate vibration and designed to give maximum air delivery.
- Bearings are heavy-duty, self-aligning, permanently sealed and lubricated.
- All moving parts (blower wheels, drives and motor) are mounted on a rugged frame, resiliently mounted and isolated from the rest of the cabinet.
- Motor mounting frame allows simple belt adjustment and motor mounting.
- Adjustable motor pulley allows speed adjustments.
- A choice of motor outputs and drives are available and must be ordered extra. See drive kit table.

Expansion Valve

- Factory installed and piped.
- Multi-circuit coils are equipped with one thermal expansion valve per circuit.
- Valves are sized for best performance.

Piping And Drain Connections

- Refrigerant line inlets and drain connections are provided on both sides of the cabinet.
- Refrigerant lines require sweat connections and are made internal to the cabinet.
- Condensate drain outlets extend outside the cabinet for ease of connection.

Air Filters

- 1 inch (25 mm) thick, throwaway fiberglass media filters are furnished as standard.
- Filter rack is adjustable to accommodate up to two inch (51 mm) thick throwaway or cleanable filters (not furnished).
- Filter rack design permits quick and easy removal of filters for servicing.

OPTIONAL ACCESSORIES - MUST BE ORDERED EXTRA

Blower Contactor Kit

- Required for applications without EH17 electric heaters. Kit is not required with EH17 electric heaters.
- Kit requires a separate 20VA (minimum rating) transformer (not furnished).

Commercial Controls Platform Kit

- Allows CB17/CBH17 to be used with economizer and various electronic thermostat control systems with plug-in connections.
- Kit contains control box with relay, terminal strip, and wiring harness.

Continued on Next Page ►

OPTIONAL ACCESSORIES - MUST BE ORDERED EXTRA

Economizer Damper Section - EMD17M

- Factory assembled and wired economizer dampers and controls are available for field installation.
- Heavy-gauge, pre-painted steel cabinet is completely insulated with thick, matte-faced fiberglass insulation.
- Large removable panels on both sides of cabinet provide complete service access.
- Mounting flanges provide ease of connection to air handler.
- Flanges on outdoor air opening and return air opening permit easy duct connection.
- Economizer has mechanically linked outdoor air and recirculated air dampers.
- Formed dampers rotate smoothly in nylon bearings.
- Outdoor air dampers are reinforced and gasketed for tight seal and quiet operation.
- Damper linkage and shafts are plated.
- The positioning of the dampers is accomplished by a 24V fully-modulating, electronic spring return damper motor with adjustable minimum position potentiometer and controlled by the room thermostat, adjustable mixed air sensor and adjustable enthalpy control.
- The enthalpy control allows 0 to 100% outdoor air to be used for "free cooling" when outdoor temperature and humidity are acceptable.

Differential Enthalpy Control

- A solid-state return air enthalpy sensor is available to be used with the outdoor air enthalpy control to determine which air has the lowest enthalpy. The air with the lowest enthalpy will be selected.
- Return air enthalpy sensor field installs in the economizer damper section.

Electric Heat - EH17

- Furnished in a separate add-on matching cabinet. Bolts, nuts and washers are furnished to secure cabinets together. Holes are pre-punched.
- Cabinet is constructed of heavy-gauge, pre-painted galvanized steel.
- Completely insulated with thick, fiberglass insulation.
- Removable panel permits service access.
- Electrical inlet provides wiring entry.
- Factory installed electric heaters are available in several sizes, see Electric Heat Data table.
- Helix wound, nichrome heating elements are exposed directly in the air stream resulting in instant heat transfer, lower coil temperatures and long service life.
- Elements are accurately located and insulated from the heavy-gauge steel support frame by high quality insulators.
- Time delay relays bring elements on and off line, in sequence and equal increments, with time delay between each.
- Elements are equipped with individual limit controls providing positive protection in case of overheating.
- Heaters may be two-stage controlled with each stage being energized only when required.
- Sub-fusing, contactors, control relays, 24V transformer, terminal block, and blower motor contactor are furnished.

Empty Spacer Cabinet - "00"

- Matching empty spacer cabinets give additional height required for plenum and grille in up-flow store cooler applications and provides spacing between unit and plenum and grille in horizontal installations not using an electric heat or hot water heat cabinet.
- Constructed of heavy-gauge, pre-painted galvanized steel.
- Completely lined with thick, matte-faced fiberglass insulation.

Heat Pump Check Valve Kit

- Field installed kit contains check valves with connecting tubing.

Hot Water Coil - HW17

- Furnished in a separate add-on matching cabinet. Bolts, nuts and washers are furnished to secure cabinets together. Holes are pre-punched.
- Cabinet is constructed of heavy-gauge, pre-painted galvanized steel.
- Completely insulated with thick, matte-faced fiberglass insulation.
- Removable panel permits service access.
- Piping inlets are furnished in both sides of cabinet.
- Coil has large face area, excellent heat transfer and low air resistance.
- Constructed of precisely spaced ripple-edged aluminum fins fitted to durable copper tubes.
- Fins are equipped with collars that grip tubing for maximum contact area.
- Flared shoulder tubing connections and silver soldering provide tight, leakproof joints.
- Long life copper tubing is easy to field service.
- Coil is thoroughly factory tested under high pressure to ensure leakproof construction.
- Valves and pumps must be furnished by installer.

Return Air Grille - RG17

- Anodized aluminum grille field installs in return air opening of air handler.

Supply Air Plenum & Grille - SPG17 and SPGH17

- Constructed of heavy-gauge, pre-painted galvanized steel.
- Completely lined with thick, matte-faced fiberglass insulation.
- Equipped with anodized aluminum grille with double deflection and four-way directional control in vertical and horizontal planes for precise control of discharge air.
- Bolts, nuts and washers are furnished to secure plenum to cabinet.

Suspension Kits (CBH17-95V & CBH17-135V only)

- Provides support of units in suspended horizontal applications.
- Kit consists of 2 angle iron channels with holes at each end.
- Kits are not available for the CBH17-185V & CBH17-275V models and must be field provided.

SPECIFICATIONS

General Data	Model No. - Up-Flow	CB17-95	CB17-135	CB17-185	CB17-275
	Model No. - Horizontal	CBH17-95	CBH17-135	CBH17-185	CBH17-275
	Nominal Tonnage	7.5	10	15	20
Connections	Suction/Vapor line o.d. - in. (mm) sweat	1-3/8 (34.9)	1-3/8 (34.9)	(2) 1-3/8 (34.9)	(2) 1-3/8 (34.9)
	Liquid line o.d. - in. (mm) sweat	(2) 3/8 (9.5)	(2) 3/8 (9.5)	(2) 1/2 (12.7)	(4) 3/8 (9.5)
	Condensate drain (fpt) - in. (mm)	(2) 1-1/4 (31.8)	(2) 1-1/4 (31.8)	(2) 1-1/4 (31.8)	(2) 1-1/4 (31.8)
Evaporator Coil	Net face area - sq. ft. (m ²)	7.98 (0.74)	10.07 (0.94)	17.38 (1.61)	23.16 (2.15)
	Coil Split - 1st stage/2nd stage (%)	60/40	61.9/38.1	53.8/46.2	52.9/47.1
	Tube diameter - in. (mm)	3/8 (9.5)	3/8 (9.5)	1/2 (12.7)	1/2 (12.7)
	Number of rows	4	4	4	4
	Fins per inch (m)	14 (551)	14 (551)	13 (512)	13 (512)
Refrigerant	Not Furnished	HCFC-22	HCFC-22	HCFC-22	HCFC-22
Filter	‡Number and size (throwaway) - in. mm	(2) 16 x 25 x 1 (1) 20 x 25 x 1	(4) 16 x 25 x 1	(6) 16 x 20 x 1 (2) 16 x 25 x 1	(6) 20 x 20 x 1 (2) 20 x 25 x 1
		(2) 406 x 635 x 25 (1) 508 x 635 x 25	(4) 406 x 635 x 25	(6) 406 x 508 x 25 (2) 406 x 635 x 25	(6) 508 x 508 x 25 (2) 508 x 635 x 25
Shipping Data	□ CB17 - lbs. (kg)	350 (159)	418 (190)	720 (327)	815 (370)
	□ CBH17 - lbs. (kg)	312 (142)	379 (172)	760 (345)	860 (390)
Blower Wheel	Nominal diameter & width - in. mm	(1) 15 x 15 381 x 381	(2) 15 x 9 381 x 229	(2) 15 x 11 381 x 279	(2) 15 x 15 381 x 381

OPTIONAL ACCESSORIES - MUST BE ORDERED EXTRA

Blower Contactor Kit		25G42	25G42	25G42	25G42	
Commercial Controls Platform Kit		55H53	55H53	55H53	55H53	
Control Circuit Transformer -115/208/240V-24V		87344	87344	87344	87344	
Differential Enthalpy Control		54G44	54G44	54G44	54G44	
Economizer Dampers	Model Number	EMD17M-95	EMD17M-135	EMD17M-185	EMD17M-275	
	Shipping Weight - lbs. (kg)	145 (66)	185 (84)	395 (179)	542 (246)	
Electric Heat		15 to 60 kW - See Electric Heat Data Tables				
Empty Spacer Cabinet	Model Number	CB17-95-00	CB17-135-00	CB17-185/275-00	CB17-185/275-00	
	Catalog Number	50F06	50F07	27G76	27G76	
	Shipping weight - lbs. (kg)	55 (25)	60 (27)	82 (37)	82 (37)	
Heat Pump Check Valve Kit		53F21 (contains 2 valves)	53F21 (contains 2 valves)	29G19 (contains 2 valves)	29G20 (contains 4 valves)	
Hot Water Coil	Model Number	HW17-95	HW17-135	HW17-185/275	HW17-185/275	
	Catalog Number	41F20	41F21	27G75	27G75	
	Heating capacity range	See Hot Water Heating Capacity Curves Pages 16 - 17				
	Water line connections	Inlet o.d. - in. (mm)	1-3/8 (34.9) sweat	1-3/8 (34.9) sweat	1-5/8 (41.3) sweat	1-5/8 (41.3) sweat
		Outlet o.d. - in. (mm)	1-3/8 (34.9) sweat	1-3/8 (34.9) sweat	1-5/8 (41.3) sweat	1-5/8 (41.3) sweat
	Tube diameter - in. (mm)	1/2 (12.7)	1/2 (12.7)	1/2 (12.7)	1/2 (12.7)	
	Fins per inch - Number of Rows	12 (472) - 2	12 (472) - 2	12 (472) - 2	12 (472) - 2	
	Net Face Area - ft. ² (m ²)	6.4 (0.59)	8.5 (0.79)	15.6 (14.5)	15.6 (14.5)	
	Shipping Weight - lbs. (kg)	95 (43)	104 (47)	160 (73)	160 (73)	
	Overload Kit - for High Efficiency Drive Kits Only	200/230V	Not Available	Not Available	79K83	79K83
460V		Not Available	Not Available	79K82	79K82	
Refrigerant Solenoid Valve		37672	37672	Not Available	Not Available	
Refrigerant Solenoid Valve Control Relay		31960	31960	Not Available	Not Available	
Return Air Grille	Model Number	RG17-95	RG17-135	RG17-185	RG17-275	
	Shipping Weight - lbs. (kg)	29 (13)	37 (17)	65 (29)	82 (37)	
	Grille Free Area - sq. ft. (m ²)	7.3 (0.68)	9.0 (0.84)	16.5 (1.53)	21.2 (1.97)	
Supply Air Plenum and Grille	Horizontal	Model Number	SPGH17-95	SPGH17-135	SPGH17-185/275	SPGH17-185/275
		Ship. Weight - lbs. (kg)	41 (19)	50 (23)	86 (39)	86 (39)
		Grille Free Area - sq. ft. (m ²)	4.5 (0.42)	5.6 (0.52)	9.7 (0.90)	9.7 (0.90)
	Up-Flow	Model No.	SPG17-95	SPG17-135	SPG17-185/275	SPG17-185/275
		Ship. weight - lbs. (kg)	124 (56)	148 (67)	242 (110)	242 (110)
		Grille Free Area - sq. ft. (m ²)	4.5 (0.42)	5.6 (0.52)	9.7 (0.90)	9.7 (0.90)
Suspension Kit - Horizontal	Catalog Number	44F93	44F94	Field Fabricate	Field Fabricate	
	Shipping Weight - lbs. (kg)	21 (10)	25 (11)	---	---	
	Length - in. (m)	60 (1.5)	72 (1.8)	---	---	

□ Weight shown is for air handler only. For total shipping weight, add the weight of the desired drive kit (See Drive Kit Selection Table) to the weight of the air handler. The air handler and the drive kit are shipped separately.

‡Standard filters are 1 inch (25 mm) thick. Optional 2 inch (51 mm) filters may be used.

Continued on Next Page ►

DRIVE KIT SELECTION

	Model No. - Up-Flow Model No. - Horizontal Nominal Tonnage	CB17-95 CBH17-95 7.5	CB17-135 CBH17-135 10	CB17-185 CBH17-185 15	CB17-275 CBH17-275 20	
1.5 HP Blower Motor Drive Kits	Model No. - 115/230V-60hz-1ph	DKB17-95/135-1.5-1	DKB17-95/135-1.5-1	---	---	
	208/230/460V-60hz-3ph	DKB17-95/135-1.5-19	DKB17-95/135-1.5-19	---	---	
	Nominal Horsepower (W)	1.5 (1119)	1.5 (1119)	---	---	
	Maximum Horsepower (W)	1.7 (1268)	1.7 (1268)	---	---	
	RPM Range	600-820	600-820	---	---	
2 HP Blower Motor Drive Kits	Shipping Weight	39 lb. (18 kg)	39 lb. (18 kg)	---	---	
	Minimum Circuit Ampacity / Maximum Fuse Size	115/230V-60hz-1ph 208/230V-60hz-3ph 460V-60hz-3ph	14 / 20 9 / 15 4 / 15	14 / 20 9 / 15 4 / 15	---	---
	Model No. - 208/230/460V-60hz-3ph	DKB17-95/275-2-10	DKB17-95/275-2-10	DKB17-95/275-2-10	DKB17-95/275-2-10	
	Nominal Horsepower (W)	2 (1492)	2 (1492)	2 (1492)	2 (1492)	
	Maximum Horsepower (W)	2.3 (1716)	2.3 (1716)	2.3 (1716)	2.3 (1716)	
3 HP Blower Motor Drive Kits	RPM Range	730-950	730-950	520-660	520-660	
	Shipping Weight	45 lb. (20 kg)	45 lb. (20 kg)	45 lb. (20 kg)	45 lb. (20 kg)	
	Minimum Circuit Ampacity / Maximum Fuse Size	208/230V-60hz-3ph 460V-60hz-3ph	10 / 15 5 / 15	10 / 15 5 / 15	10 / 15 5 / 15	10 / 15 5 / 15
	Model No. - 208/230/460V-60hz-3ph	---	---	DKB17-185/275-3-12	DKB17-185/275-3-12	
	Nominal Horsepower (W)	---	---	3 (2238)	3 (2238)	
5 HP Blower Motor Drive Kits	Maximum Horsepower (W)	---	---	3.4 (2536)	3.4 (2536)	
	RPM Range	---	---	600-750	600-750	
	Shipping Weight	---	---	51 lbs. (23 kg)	51 lbs. (23 kg)	
	Minimum Circuit Ampacity / Maximum Fuse Size	208/230V-60hz-3ph 460V-60hz-3ph	---	---	14 / 20 6 / 15	14 / 20 6 / 15
	Model No. - 208/230/460V-60hz-3ph	---	---	DKB17-185/275-5-14	DKB17-185/275-5-14	
1 High Efficiency 5 HP Blower Motor Drive Kits	Nominal Horsepower (W)	---	---	5 (3730)	5 (3730)	
	Maximum Horsepower (W)	---	---	5.7 (4252)	5.7 (4252)	
	RPM Range	---	---	690-830	690-830	
	Shipping Weight	---	---	70 (32)	70 (32)	
	Minimum Circuit Ampacity / Maximum Fuse Size	208/230V-60hz-3ph 460V-60hz-3ph	---	---	21 / 35 10 / 15	21 / 35 10 / 15
1 High Efficiency 5 HP Blower Motor Drive Kits	Model No. - 208/230/460V-60hz-3ph	---	---	DKB17-185/275-5-20	DKB17-185/275-5-20	
	Nominal Horsepower (W)	---	---	5 (3730)	5 (3730)	
	Maximum Horsepower (W)	---	---	5.7 (4252)	5.7 (4252)	
	RPM Range	---	---	690-830	690-830	
	Shipping Weight	---	---	70 (32)	70 (32)	
1 High Efficiency 5 HP Blower Motor Drive Kits	Minimum Circuit Ampacity / Maximum Fuse Size	208/230V-60hz-3ph 460V-60hz-3ph	---	---	14.3 / 20 6.7 / 10	14.3 / 20 6.7 / 10

¹ Overload Kit required for high efficiency drive kits. See Specifications Table.

BLOWER DATA

CB17-95V AND CBH17-95V BLOWER PERFORMANCE - All data is measured external to the unit with air filters in place.

Air Volume cfm (L/s)	STATIC PRESSURE EXTERNAL TO UNIT — Inches Water Gauge (Pa)										
	0.2 (50)	0.3 (75)	0.4 (100)	0.5 (125)	0.6 (150)	0.7 (175)	0.8 (200)	0.9 (225)	1.0 (250)	1.25 (310)	1.5 (375)
	RPM hp (W)	RPM hp (W)	RPM hp (W)	RPM hp (W)	RPM hp (W)	RPM hp (W)	RPM hp (W)	RPM hp (W)	RPM hp (W)	RPM hp (W)	RPM hp (W)
2000 (945)	----	----	----	550 0.35 (261)	590 0.50 (373)	630 0.55 (410)	650 0.60 (448)	690 0.70 (522)	720 0.75 (560)	790 1.05 (783)	850 1.30 (970)
2500 (1180)	----	----	560 0.30 (224)	600 0.55 (410)	630 0.65 (485)	670 0.75 (560)	700 0.80 (597)	730 .90 (671)	760 1.00 (746)	830 1.30 (970)	880 1.40 (1044)
3000 (1415)	560 0.60 (448)	590 0.65 (485)	625 0.75 (560)	650 0.85 (634)	690 0.95 (709)	720 1.00 (746)	750 1.15 (858)	775 1.25 (933)	800 1.30 (970)	860 1.55 (1156)	925 1.80 (1343)
3500 (1650)	620 0.95 (709)	650 1.05 (783)	685 1.05 (783)	715 1.15 (858)	740 1.30 (970)	770 1.35 (1007)	800 1.50 (1119)	825 1.60 (1194)	840 1.65 (1231)	910 1.95 (1455)	970 2.20 (1641)
4000 (1890)	700 1.40 (1044)	725 1.50 (1119)	750 1.60 (1194)	775 1.65 (1231)	800 1.75 (1306)	825 1.85 (1380)	850 1.95 (1455)	875 2.05 (1529)	900 2.15 (1604)	----	----

CB17-135V AND CBH17-135V BLOWER PERFORMANCE - All data is measured external to the unit with air filters in place.

Air Volume cfm (L/s)	STATIC PRESSURE EXTERNAL TO UNIT — Inches Water Gauge (Pa)										
	0.2 (50)	0.3 (75)	0.4 (100)	0.5 (125)	0.6 (150)	0.7 (175)	0.8 (200)	0.9 (225)	1.0 (250)	1.25 (310)	1.5 (375)
	RPM hp (W)	RPM hp (W)	RPM hp (W)	RPM hp (W)	RPM hp (W)	RPM hp (W)	RPM hp (W)	RPM hp (W)	RPM hp (W)	RPM hp (W)	RPM hp (W)
3000 (1415)	----	550 0.50 (373)	575 0.60 (448)	610 0.70 (522)	650 0.80 (597)	680 .90 (671)	725 1.05 (783)	750 1.20 (895)	790 1.30 (970)	860 1.55 (1156)	925 1.85 (1380)
3500 (1650)	550 0.60 (448)	575 0.70 (522)	620 0.80 (597)	650 .95 (709)	680 1.05 (793)	725 1.15 (858)	750 1.25 (933)	790 1.40 (1044)	820 1.55 (1156)	900 1.95 (1455)	950 2.10 (1567)
4000 (1890)	595 0.85 (634)	625 0.95 (709)	665 1.10 (821)	700 1.20 (895)	725 1.30 (970)	750 1.40 (1044)	790 1.55 (1156)	820 1.70 (1268)	850 1.90 (1417)	920 2.15 (1604)	----
4500 (2125)	650 1.15 (858)	680 1.30 (970)	715 1.40 (1044)	740 1.55 (1156)	755 1.70 (1268)	810 1.80 (1343)	840 1.95 (1455)	870 2.10 (1567)	890 2.25 (1679)	----	----
5000 (2360)	710 1.55 (1156)	730 1.70 (1268)	760 1.80 (1343)	800 1.95 (1455)	825 2.15 (1604)	850 2.30 (1716)	----	----	----	----	----
5500 (2595)	750 2.00 (1492)	775 2.10 (1567)	815 2.30 (1716)	----	----	----	----	----	----	----	----

CB17-185V AND CBH17-185V BLOWER PERFORMANCE - All data is measured external to the unit with air filters in place.

Air Volume cfm (L/s)	STATIC PRESSURE EXTERNAL TO UNIT — Inches Water Gauge (Pa)										
	0.1 (25)	0.2 (50)	0.3 (75)	0.4 (100)	0.5 (125)	0.6 (150)	0.7 (175)	0.8 (200)	0.9 (225)	1.0 (250)	1.25 (310)
	RPM hp (W)	RPM hp (W)	RPM hp (W)	RPM hp (W)	RPM hp (W)	RPM hp (W)	RPM hp (W)	RPM hp (W)	RPM hp (W)	RPM hp (W)	RPM hp (W)
5000 (2360)	----	----	500 1.00 (746)	530 1.05 (783)	560 1.20 (895)	630 1.50 (1119)	640 1.55 (1156)	660 1.65 (1231)	685 1.75 (1306)	720 1.90 (1417)	800 2.25 (1679)
5500 (2595)	----	495 1.05 (783)	525 1.20 (895)	555 1.35 (1007)	585 1.50 (1119)	635 1.65 (1231)	650 1.70 (1268)	680 1.85 (1380)	710 2.05 (1529)	740 2.20 (1641)	825 2.55 (1902)
6000 (2830)	490 1.20 (895)	520 1.30 (970)	550 1.45 (1082)	580 1.60 (1194)	610 1.75 (1306)	640 1.90 (1417)	675 2.10 (1567)	705 2.20 (1641)	730 2.35 (1753)	760 2.50 (1865)	840 2.90 (2163)
6500 (3065)	515 1.45 (1082)	550 1.60 (1194)	575 1.75 (1306)	610 1.90 (1417)	635 2.05 (1529)	670 2.25 (1679)	700 2.35 (1753)	725 2.50 (1865)	750 2.65 (1977)	780 2.75 (2052)	870 3.30 (2462)
7000 (3305)	550 1.75 (1306)	575 1.90 (1417)	605 2.05 (1529)	635 2.25 (1679)	665 2.35 (1753)	690 2.55 (1902)	720 2.65 (1977)	745 2.85 (2126)	775 3.00 (2238)	810 3.20 (2387)	----
7500 (3540)	575 2.05 (1529)	605 2.25 (1679)	635 2.55 (1828)	660 2.45 (1902)	690 2.75 (2052)	720 2.90 (2163)	740 3.05 (2275)	775 3.25 (2425)	800 3.40 (2536)	835 3.55 (2648)	----
8000 (3775)	605 2.40 (1790)	635 2.60 (1940)	660 2.80 (2089)	690 2.95 (2201)	720 3.15 (2350)	740 3.30 (2462)	775 3.50 (2611)	800 3.65 (2723)	835 3.85 (2872)	870 4.10 (3059)	----

CB17-275V AND CBH17-275V BLOWER PERFORMANCE - All data is measured external to the unit with air filters in place.

Air Volume cfm (L/s)	STATIC PRESSURE EXTERNAL TO UNIT — Inches Water Gauge (Pa)										
	0.1 (25)	0.2 (50)	0.3 (75)	0.4 (100)	0.5 (125)	0.6 (150)	0.7 (175)	0.8 (200)	0.9 (225)	1.0 (250)	1.25 (310)
	RPM hp (W)	RPM hp (W)	RPM hp (W)	RPM hp (W)	RPM hp (W)	RPM hp (W)	RPM hp (W)	RPM hp (W)	RPM hp (W)	RPM hp (W)	RPM hp (W)
6500 (3065)	515 1.35 (1007)	535 1.45 (1082)	570 1.70 (1268)	585 1.80 (1343)	615 1.90 (1417)	635 2.00 (1492)	670 2.25 (1679)	690 2.30 (1716)	720 2.45 (1828)	740 2.50 (1865)	805 2.95 (2201)
7000 (3305)	525 1.55 (1156)	545 1.70 (1268)	575 1.85 (1380)	600 2.00 (1492)	625 2.15 (1604)	650 2.30 (1716)	680 2.45 (1828)	705 2.55 (1902)	730 2.70 (2014)	755 2.80 (2089)	820 3.25 (2425)
7500 (3540)	530 1.70 (1268)	555 1.85 (1380)	585 2.05 (1529)	615 2.25 (1679)	630 2.30 (1716)	665 2.55 (1902)	685 2.65 (1977)	720 2.80 (2089)	740 2.90 (2163)	770 3.15 (2350)	825 3.60 (2686)
8000 (3775)	540 1.90 (1417)	565 2.15 (1604)	590 2.25 (1679)	625 2.45 (1828)	650 2.65 (1977)	675 2.80 (2089)	705 2.95 (2201)	730 3.05 (2275)	760 3.35 (2499)	785 3.40 (2536)	840 3.95 (2947)
8500 (4010)	555 2.15 (1604)	580 2.30 (1714)	610 2.55 (1902)	630 2.70 (2014)	665 2.90 (2163)	690 3.10 (2313)	720 3.20 (2387)	745 3.35 (2499)	775 3.60 (2686)	805 3.80 (2835)	855 4.40 (3282)
9000 (4245)	565 2.35 (1753)	595 2.60 (1940)	630 2.85 (2126)	655 3.05 (2275)	680 3.20 (2387)	710 3.40 (2536)	735 3.55 (2648)	760 3.75 (2798)	795 4.00 (2894)	820 4.20 (3133)	870 4.70 (3506)
9500 (4485)	585 2.65 (1977)	620 2.95 (2201)	640 3.15 (2350)	670 3.05 (2275)	700 3.55 (2648)	730 3.75 (2798)	755 3.90 (2909)	785 4.15 (3096)	815 4.40 (3282)	840 4.65 (3469)	890 5.15 (3842)
10,000 (4720)	610 3.05 (2275)	635 3.30 (2462)	660 3.45 (2574)	690 3.30 (2462)	720 3.90 (2909)	750 4.10 (3059)	775 4.35 (3245)	805 4.55 (3394)	835 4.85 (3618)	860 5.15 (3842)	----
10,500 (4955)	625 3.35 (2499)	655 3.55 (2648)	685 3.80 (2835)	715 4.05 (3021)	745 4.30 (3208)	775 4.60 (3432)	800 4.75 (3544)	830 5.05 (3767)	860 5.40 (4028)	880 5.70 (4252)	----

BLOWER DATA

ACCESSORY AIR RESISTANCE — Electric heat section, plenum and grilles have no appreciable air resistance.

Air Volume		Total Resistance													
		HW17 Hot Water Coil						EMD17 Economizer Dampers							
		HW17-95		HW17-135		HW17-185/275		EMD17M-95		EMD17M-135		EMD17M-185		EMD17M-275	
cfm	L/s	in. w.g.	Pa	in. w.g.	Pa	in. w.g.	Pa	in. w.g.	Pa	in. w.g.	Pa	in. w.g.	Pa	in. w.g.	Pa
2000	945	0.13	32	---	---	---	---	0.02	5	---	---	---	---	---	---
2500	1180	0.16	40	---	---	---	---	0.04	10	---	---	---	---	---	---
3000	1415	0.18	45	0.14	35	---	---	0.07	17	0.03	7	---	---	---	---
3500	1650	0.20	50	0.17	42	---	---	0.09	22	0.05	12	---	---	---	---
4000	1890	0.24	60	0.18	45	---	---	0.12	30	0.07	17	---	---	---	---
4500	2125	---	---	0.20	50	---	---	---	---	0.09	22	---	---	---	---
5000	2360	---	---	0.24	60	0.08	20	---	---	0.11	27	0.04	10	---	---
5500	2595	---	---	0.27	67	0.10	25	---	---	0.13	32	0.05	12	---	---
6000	2830	---	---	---	---	0.11	27	---	---	---	---	0.06	15	---	---
6500	3070	---	---	---	---	0.13	32	---	---	---	---	0.07	17	0.04	10
7000	3305	---	---	---	---	0.15	37	---	---	---	---	0.08	20	0.05	12
7500	3540	---	---	---	---	0.17	42	---	---	---	---	0.09	22	0.06	15
8000	3775	---	---	---	---	0.18	45	---	---	---	---	0.10	25	0.07	17
8500	4010	---	---	---	---	0.21	52	---	---	---	---	---	---	0.08	20
9000	4250	---	---	---	---	0.23	57	---	---	---	---	---	---	0.08	20
9500	4485	---	---	---	---	0.25	62	---	---	---	---	---	---	0.09	22
10,000	4720	---	---	---	---	0.27	67	---	---	---	---	---	---	0.10	25
10,500	4955	---	---	---	---	0.30	75	---	---	---	---	---	---	0.11	27

SUPPLY AIR PLENUM AND GRILLE AIR THROW DATA

Air Handler and Supply Plenum and Grille Model Number	Air Volume		*Effective Throw — ft. (m)	
	cfm	L/s	†10 ft. (3.0 m) Ceiling	
			Front of Unit	45° From Unit
†CB17-95V With SPG17-95 or CBH17-95V With SPGH17-95	2000	945	40 (12.2)	31 (9.4)
	2500	1180	46 (14.0)	36 (11.0)
	3000	1415	53 (16.2)	41 (12.5)
	3500	1650	56 (17.1)	45 (13.7)
	4000	1890	63 (19.2)	50 (15.2)
†CB17-135V With SPG17-135 or CBH17-135V With SPGH17-135	3000	1415	50 (15.2)	35 (10.7)
	3500	1650	55 (16.8)	40 (12.2)
	4000	1890	61 (18.6)	44 (13.4)
	4500	2125	67 (20.4)	50 (15.2)
	5000	2360	71 (21.6)	56 (17.1)
5500	2595	74 (22.6)	61 (18.6)	
†CB17-185V With SPG17-185/275 or CBH17-185V With SPGH17-185/275	5000	2360	30 (9.1)	19 (5.8)
	5500	2595	31 (9.4)	19 (5.8)
	6000	2830	35 (10.7)	22 (6.7)
	6500	3070	36 (11.0)	22 (6.7)
	7000	3305	36 (11.0)	22 (6.7)
7500	3540	39 (11.9)	24 (7.3)	
8000	3775	41 (12.5)	26 (7.9)	
†CB17-275V With SPG17-185/275 or CBH17-275V With SPGH17-185/275	6500	3070	36 (11.0)	22 (6.7)
	7000	3305	36 (11.0)	22 (6.7)
	7500	3540	39 (11.9)	24 (7.3)
	8000	3775	41 (12.5)	26 (7.9)
	8500	4010	43 (13.1)	27 (8.2)
	9000	4250	46 (14.0)	29 (8.8)
	9500	4485	49 (14.9)	30 (9.1)
10,000	4720	53 (16.2)	33 (10.1)	
10,500	4955	55 (16.8)	34 (10.4)	

*Effective throw is terminated at a point where conditioned air reaches a level of 3 feet (1 m) above the floor or where velocity has decreased to 50 feet per minute (0.25 m/s).

†Ceiling height not applicable to CB17 Up-Flow models.

HOT WATER COIL PRESSURE DROP

Flow Rate		Pressure Drop — feet of water (kPa)		
gpm	L/s	HW17-95	HW17-135	HW17-185/275
15	0.95	0.93 (2.8)	1.18 (3.5)	----
20	1.25	1.56 (4.7)	1.99 (5.9)	0.55 (1.6)
25	1.60	2.33 (7.0)	2.97 (8.9)	0.82 (2.4)
30	1.90	3.24 (9.7)	4.13 (12.3)	1.14 (3.4)
35	2.20	4.27 (12.7)	5.44 (16.2)	1.50 (4.5)
40	2.50	5.44 (16.2)	6.92 (20.6)	1.91 (5.7)
45	2.85	6.72 (20.1)	8.56 (25.5)	2.36 (7.0)
50	3.15	----	----	2.86 (8.5)
55	3.45	----	----	3.39 (10.1)
60	3.80	----	----	3.97 (11.8)
65	4.10	----	----	4.58 (13.7)
70	4.40	----	----	5.23 (15.6)

INSTALLATION CLEARANCES

Model No. - Up-Flow	CB17-95V	CB17-135V	CB17-185V	CB17-275V
Model No. - Horizontal	CBH17-95V	CBH17-135V	CBH17-185V	CBH17-275V
Cabinet	0 inch (0 mm)	0 inch (0 mm)	0 inch (0 mm)	0 inch (0 mm)
Plenum	1 inch (25 mm)	1 inch (25 mm)	1 inch (25 mm)	1 inch (25 mm)
Duct	*1 inch (*25 mm)	**1 inch (**25 mm)	*1 inch (*25 mm)	*1 inch (*25 mm)

*Within 3 feet (1 m) of the unit.

**Within 4 feet (1.2 m) of the unit.

CB17-95V/CBH17-95V OPTIONAL ELECTRIC HEAT DATA

Electric Heat Model No. & Net Weight	No. of Steps	Volts Input	kW Input	① Btuh Output	③ Total Unit + Electric Heat Minimum circuit Ampacity		Total Unit + Electric Heat Maximum Overcurrent Protection	
					1.5 hp (1.1 kW)	2 hp (1.5 kW)	1.5 hp (1.1 kW)	2 hp (1.5 kW)
15 kW EH17-95-15 200/230V-3ph 63F18 460V - 3 ph 63F22 170 lbs. (77 kg)	1	208	10.4	35,500	54	55	60	60
	1	220	12.6	43,000	54	55	60	60
	1	230	13.8	47,100	54	55	60	60
	1	240	15.0	51,200	54	55	60	60
	1	440	12.6	43,000	27	27	30	30
	1	460	13.8	47,100	27	27	30	30
	1	480	15.0	51,200	27	27	30	30
30 kW EH17-95-30 200/230V-3ph 63F19 460V - 3 ph 63F23 176 lbs. (80 kg)	②2	208	20.8	71,000	99	100	100	100
	②2	220	25.2	86,000	99	100	100	100
	②2	230	27.5	93,900	99	100	100	100
	②2	240	30.0	102,400	99	100	100	100
	1	440	25.2	86,000	49	50	50	50
	1	460	27.5	93,900	49	50	50	50
	1	480	30.0	102,400	49	50	50	50
45 kW EH17-95-45 200/230V-3ph 63F20 460V - 3 ph 63F24 182 lbs. (83 kg)	②3	208	31.3	106,800	144	145	150	150
	②3	220	37.8	129,000	144	145	150	150
	②3	230	41.3	141,000	144	145	150	150
	②3	240	45.0	153,600	144	145	150	150
	②2	440	37.8	129,000	72	72	80	80
	②2	460	41.3	141,000	72	72	80	80
	②2	480	45.0	153,600	72	72	80	80

① Electric heater capacity only — does not include additional blower motor heat capacity.

② May be used with two stage control.

③ Refer to National Electrical Code manual to determine wire, fuse and disconnect size requirements. Use wires suitable for at least 167°F (75°C).

CB17-135V/CBH17-135V OPTIONAL ELECTRIC HEAT DATA

Electric Heat Model No. & Net Weight	No. of Steps	Volts Input	kW Input	① Btuh Output	③ Total Unit + Electric Heat Minimum circuit Ampacity		Total Unit + Electric Heat Maximum Overcurrent Protection	
					1.5 hp (1.1 kW)	2 hp (1.5 kW)	1.5 hp (1.1 kW)	2 hp (1.5 kW)
15 kW EH17-135-15 200/230V-3ph 63F30 460V - 3 ph 63F34 193 lbs. (88 kg)	1	208	10.4	35,500	54	55	60	60
	1	220	12.6	43,000	54	55	60	60
	1	230	13.8	47,100	54	55	60	60
	1	240	15.0	51,200	54	55	60	60
	1	440	12.6	43,000	27	27	30	30
	1	460	13.8	47,100	27	27	30	30
	1	480	15.0	51,200	27	27	30	30
30 kW EH17-135-30 200/230V-3ph 63F31 460V - 3 ph 63F35 200 lbs. (91 kg)	②2	208	20.8	71,000	99	100	100	100
	②2	220	25.2	86,000	99	100	100	100
	②2	230	27.5	93,900	99	100	100	100
	②2	240	30.0	102,400	99	100	100	100
	1	440	25.2	86,000	49	50	50	50
	1	460	27.5	93,900	49	50	50	50
	1	480	30.0	102,400	49	50	50	50
45 kW EH17-135-45 200/230V-3ph 63F32 460V - 3 ph 63F36 207 lbs. (94 kg)	②3	208	31.3	106,800	144	145	150	150
	②3	220	37.8	129,000	144	145	150	150
	②3	230	41.3	141,000	144	145	150	150
	②3	240	45.0	153,600	144	145	150	150
	②2	440	37.8	129,000	72	72	80	80
	②2	460	41.3	141,000	72	72	80	80
	②2	480	45.0	153,600	72	72	80	80
60 kW EH17-135-60 200/230V-3ph 63F33 460V - 3 ph 63F37 214 lbs. (97 kg)	②4	208	41.7	143,400	153	154	175	175
	②4	220	50.4	172,000	153	154	175	175
	②4	230	55.1	188,100	153	154	175	175
	②4	240	60.0	204,800	153	154	175	175
	②2	440	50.4	172,000	76	77	80	80
	②2	460	55.1	188,100	76	77	80	80
	②2	480	60.0	204,800	76	77	80	80

① Electric heater capacity only — does not include additional blower motor heat capacity.

② May be used with two stage control.

③ Refer to National Electrical Code manual to determine wire, fuse and disconnect size requirements. Use wires suitable for at least 167°F (75°C).

CB17-185V/CBH17-185V AND CB17-275V/CBH17-275V OPTIONAL ELECTRIC HEAT DATA

Electric Heat Model No. & Net Weight	No. of Steps	Volts Input	kW Input	① Btuh Output	③ Total Unit + Electric Heat Minimum Circuit Ampacity			Total Unit + Electric Heat Maximum Overcurrent Protection		
					2 hp (1.5 kW)	3 hp (2.2 kW)	④ 5 hp (3.7 kW)	2 hp (1.5 kW)	3 hp (2.2 kW)	④ 5 hp (3.7 kW)
15 kW EH17-185/275-15 200/230V-3ph 26G97 460V - 3 ph 27G01 191 lbs. (87 kg)	1	208	10.4	35,500	55	59	66	60	60	70
	1	220	12.6	43,000	55	59	66	60	60	70
	1	230	13.8	47,100	55	59	66	60	60	70
	1	240	15.0	51,200	55	59	66	60	60	70
	1	440	12.6	43,000	27	29	32	30	30	35
	1	460	13.8	47,100	27	29	32	30	30	35
	1	480	15.0	51,200	27	29	32	30	30	35
30 kW EH17-185/275-30 200/230V-3ph 26G98 460V - 3 ph 27G02 195 lbs. (88 kg)	② 2	208	20.8	71,000	100	104	112	100	110	125
	② 2	220	25.2	86,000	100	104	112	100	110	125
	② 2	230	27.5	93,900	100	104	112	100	110	125
	② 2	240	30.0	102,400	100	104	112	100	110	125
	1	440	25.2	86,000	50	52	55	50	60	60
	1	460	27.5	93,900	50	52	55	50	60	60
	1	480	30.0	102,400	50	52	55	50	60	60
45 kW EH17-185/275-45 200/230V-3ph 26G99 460V - 3 ph 27G03 205 lbs. (93 kg)	② 3	208	31.3	106,800	145	149	157	150	150	175
	② 3	220	37.8	129,000	145	149	157	150	150	175
	② 3	230	41.3	141,000	145	149	157	150	150	175
	② 3	240	45.0	153,600	145	149	157	150	150	175
	② 2	440	37.8	129,000	72	74	78	80	80	80
	② 2	460	41.3	141,000	72	74	78	80	80	80
	② 2	480	45.0	153,600	72	74	78	80	80	80
60 kW EH17-185/275-60 200/230V-3ph 27G00 460V - 3 ph 27G04 209 lbs. (95 kg)	② 4	208	41.7	143,400	154	158	166	175	175	175
	② 4	220	50.4	172,000	154	158	166	175	175	175
	② 4	230	55.1	188,100	154	158	166	175	175	175
	② 4	240	60.0	204,800	154	158	166	175	175	175
	② 2	440	50.4	172,000	77	79	82	80	80	90
	② 2	460	55.1	188,100	77	79	82	80	80	90
	② 2	480	60.0	204,800	77	79	82	80	80	90

① Electric heater capacity only — does not include additional blower motor heat capacity.

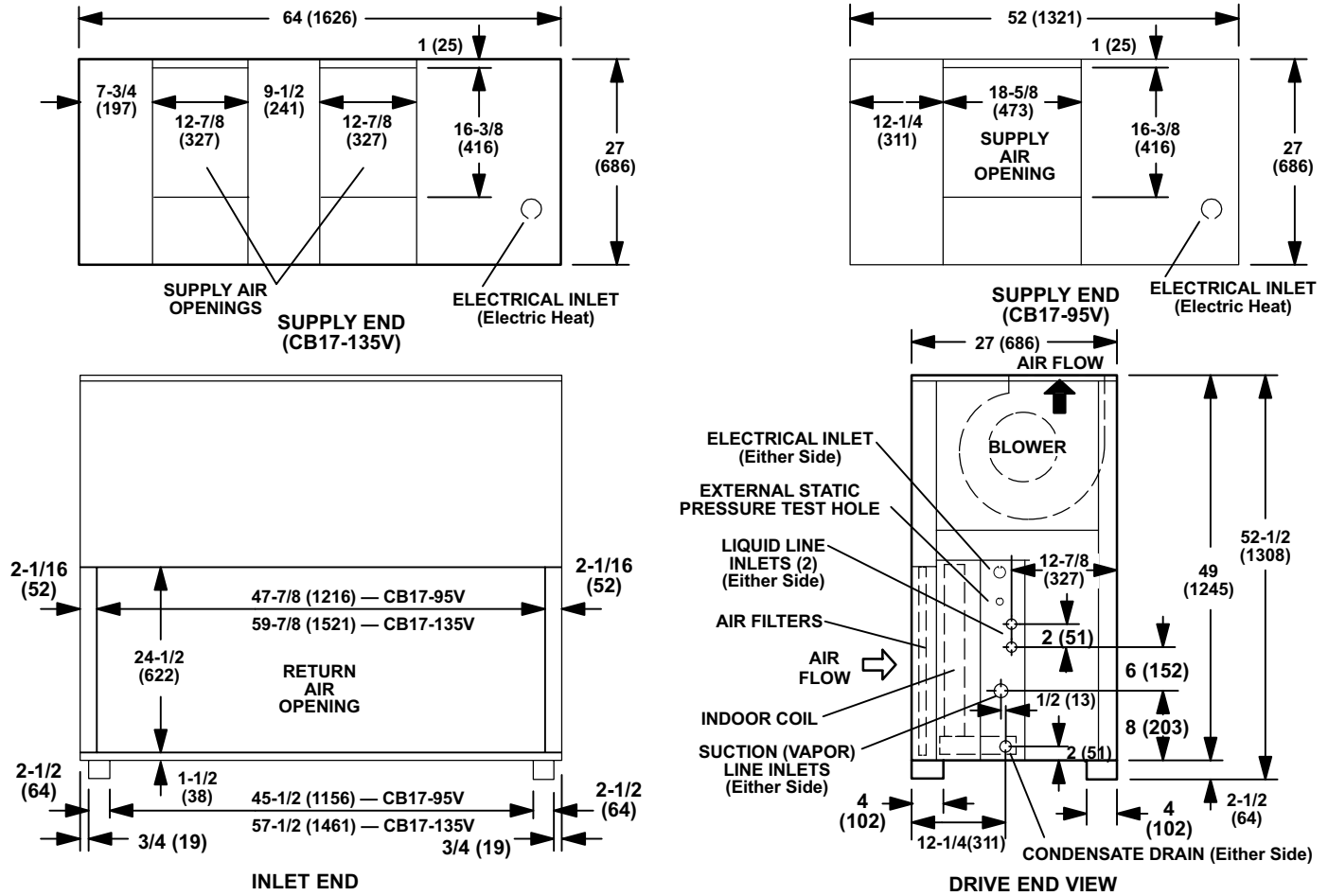
② May be used with two stage control.

③ Refer to National Electrical Code manual to determine wire, fuse and disconnect size requirements. Use wires suitable for at least 167°F (75°C).

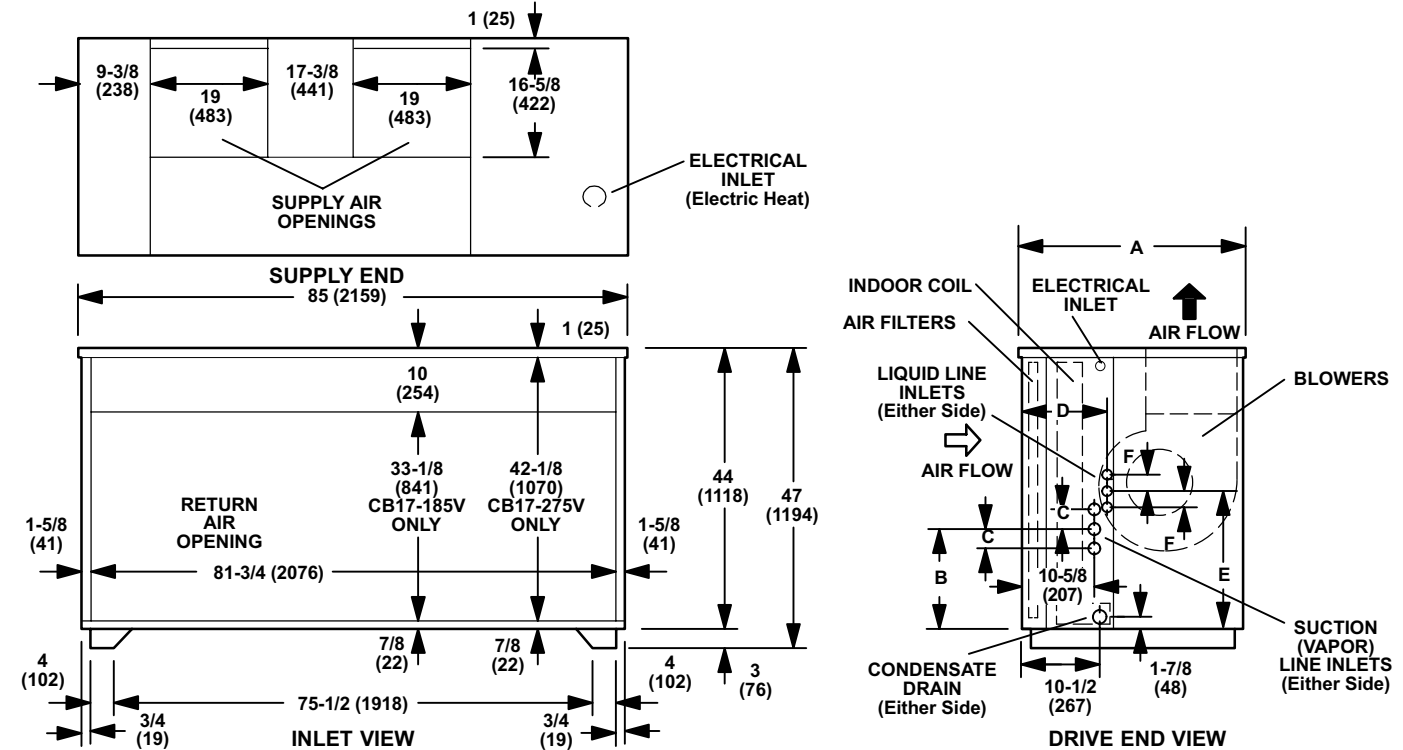
④ Values listed are for both Standard and High Efficiency drive kits.

DIMENSIONS - INCHES (MM)

CB17-95V AND CB17-135V UP-FLOW MODELS



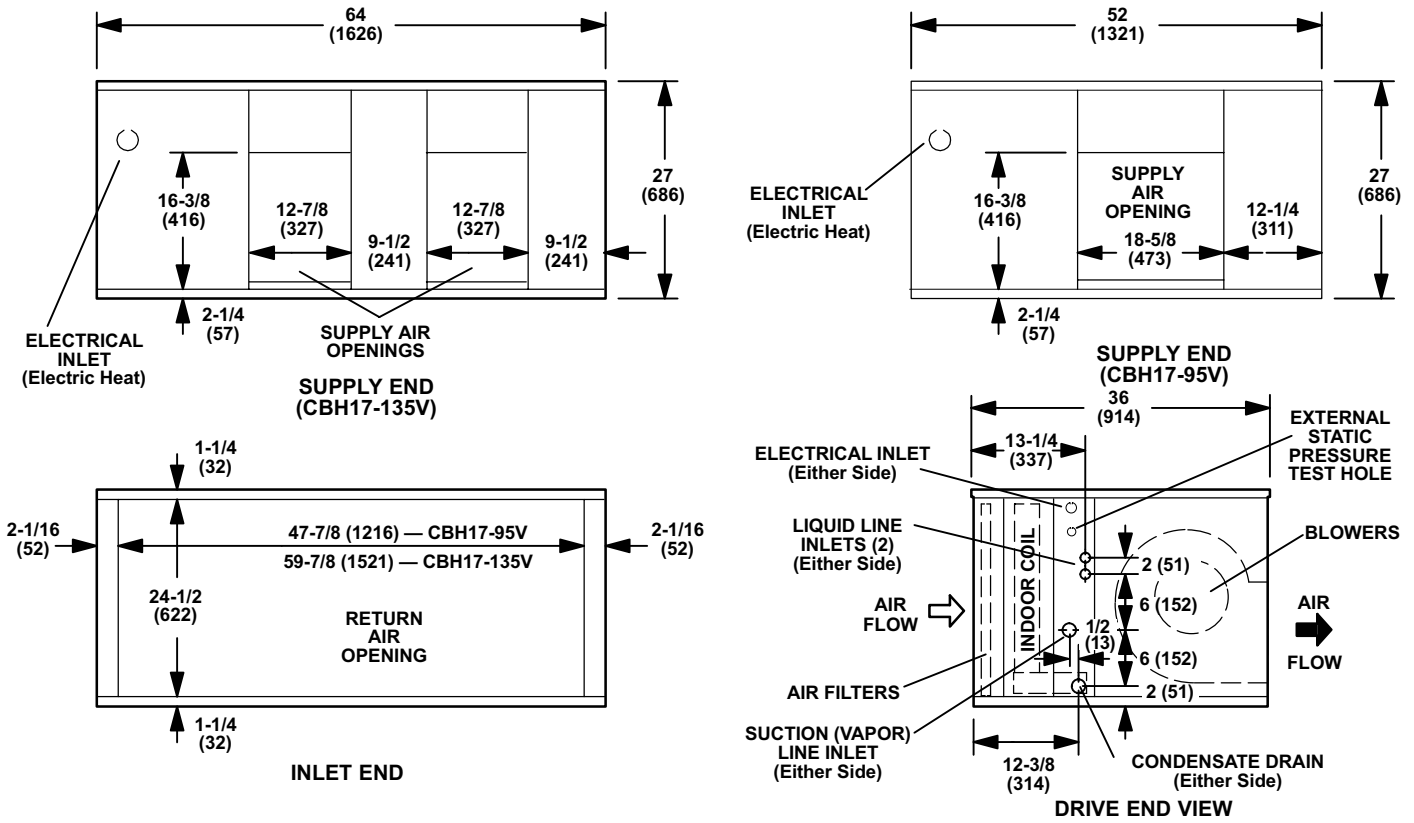
CB17-185V AND CB17-275V UP-FLOW MODELS



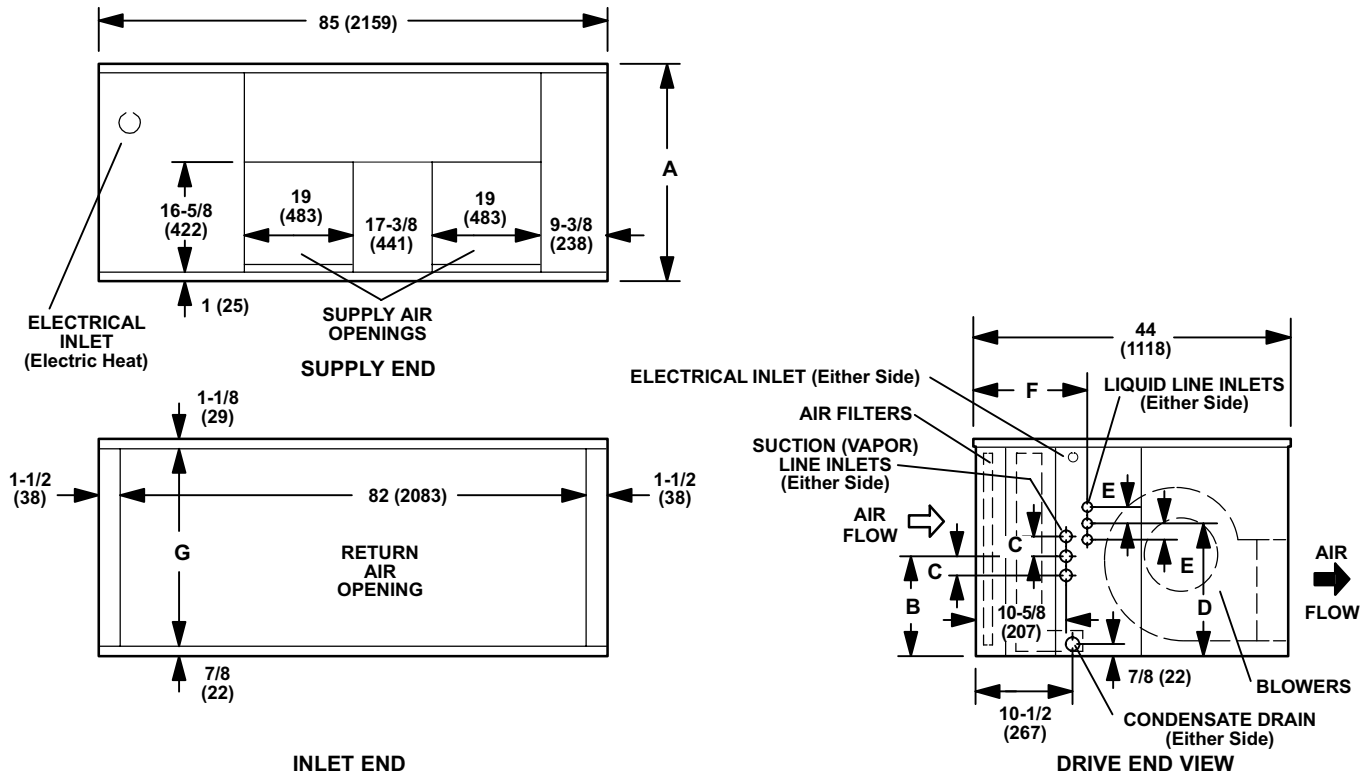
Model No.	A		B		C		D		E		F	
	in.	mm	in.	mm	in.	mm	in.	mm	in.	mm	in.	mm
CB17-185V	35	889	18-3/8	467	2-1/2	57	12-1/2	318	22-5/8	575	1-1/4	32
CB17-275V	44	1118	22-3/4	578	2-5/8	67	14-1/4	362	22-1/2	572	4-7/8	124

DIMENSIONS - INCHES (MM)

CBH17-95V AND CBH17-135V HORIZONTAL MODELS



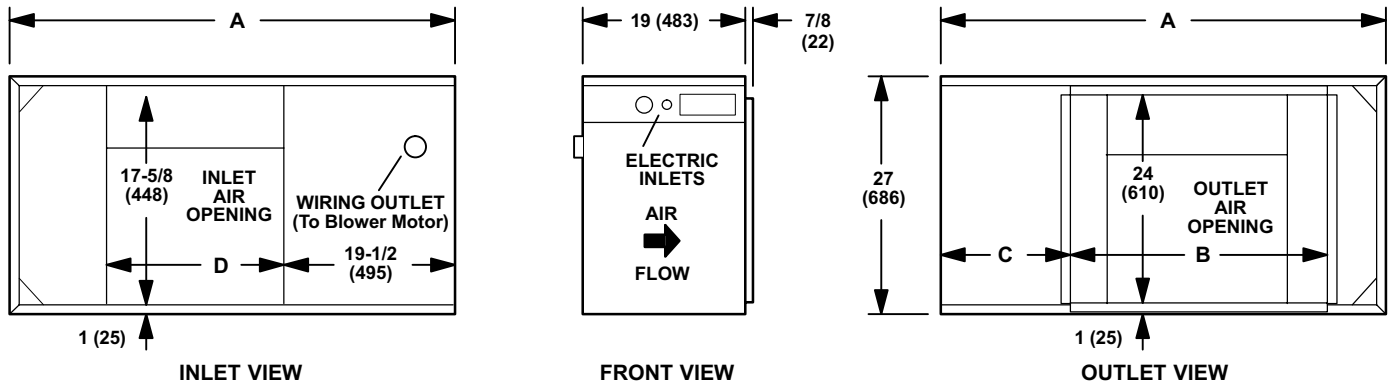
CBH17-185V AND CBH17-275V HORIZONTAL MODELS



Model No.	A		B		C		D		E		F		G	
	in.	mm	in.	mm	in.	mm	in.	mm	in.	mm	in.	mm	in.	mm
CBH17-185V	35	889	18-3/8	467	2-1/4	57	22-5/8	575	1-1/4	32	13-1/8	333	33	838
CBH17-275V	44	1118	22-11/16	576	2-5/8	67	22-7/16	570	4-7/8	124	14-7/8	378	42	1067

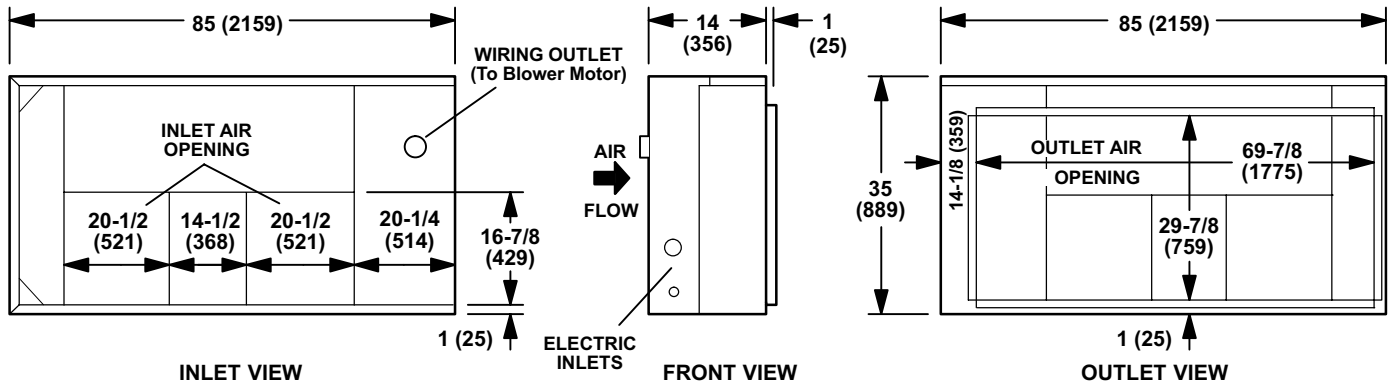
ACCESSORY DIMENSIONS - INCHES (MM)

EH17-95 AND EH17-135 ELECTRIC HEAT SECTION

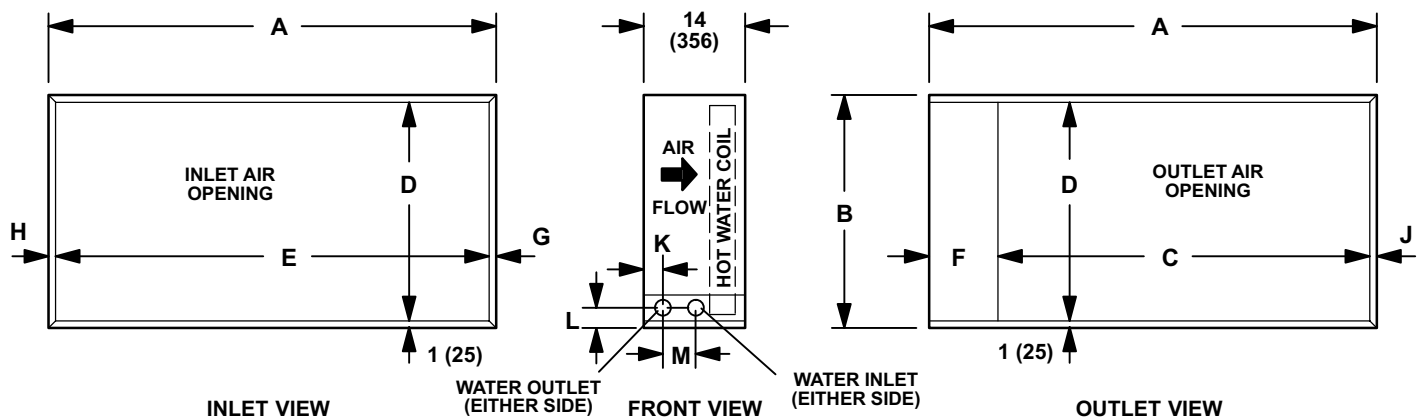


Model No.	A		B		C		D	
	in.	mm	in.	mm	in.	mm	in.	mm
EH17-95	52	1321	29-7/8	759	14-9/16	370	21-1/16	535
EH17-135	64	1626	39-7/8	1013	18-1/8	470	37-15/16	948

EH17-185/275 ELECTRIC HEAT SECTION



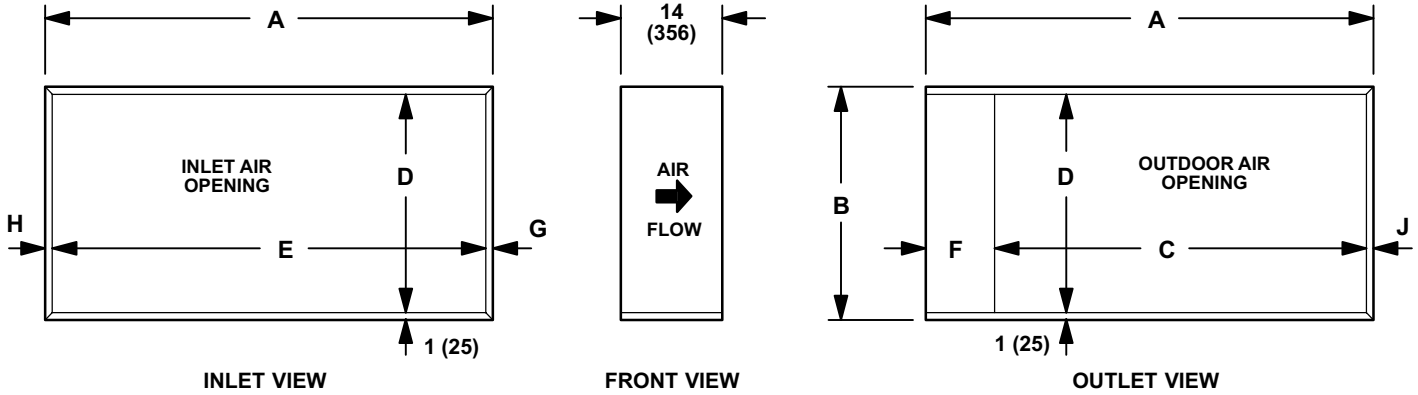
HW17 SERIES HOT WATER HEAT SECTION



Model No.	A	B	C	D	E	F	G	H	J	K	L	M	
HW17-95	in.	52	27	41-1/2	25	50	9-1/2	1	1	1	3	2-3/8	4
	mm	1321	686	1054	635	1270	241	25	25	25	76	60	102
HW17-135	in.	64	27	53-1/2	25	62	9-1/2	1	1	1	3	2-3/8	4
	mm	1626	686	1359	635	1575	241	25	25	25	76	60	102
HW17-185/275	in.	85	35	69	33	70	13	13	2	3	2-1/4	2	2-3/4
	mm	2159	889	1753	838	1778	330	330	51	76	57	51	70

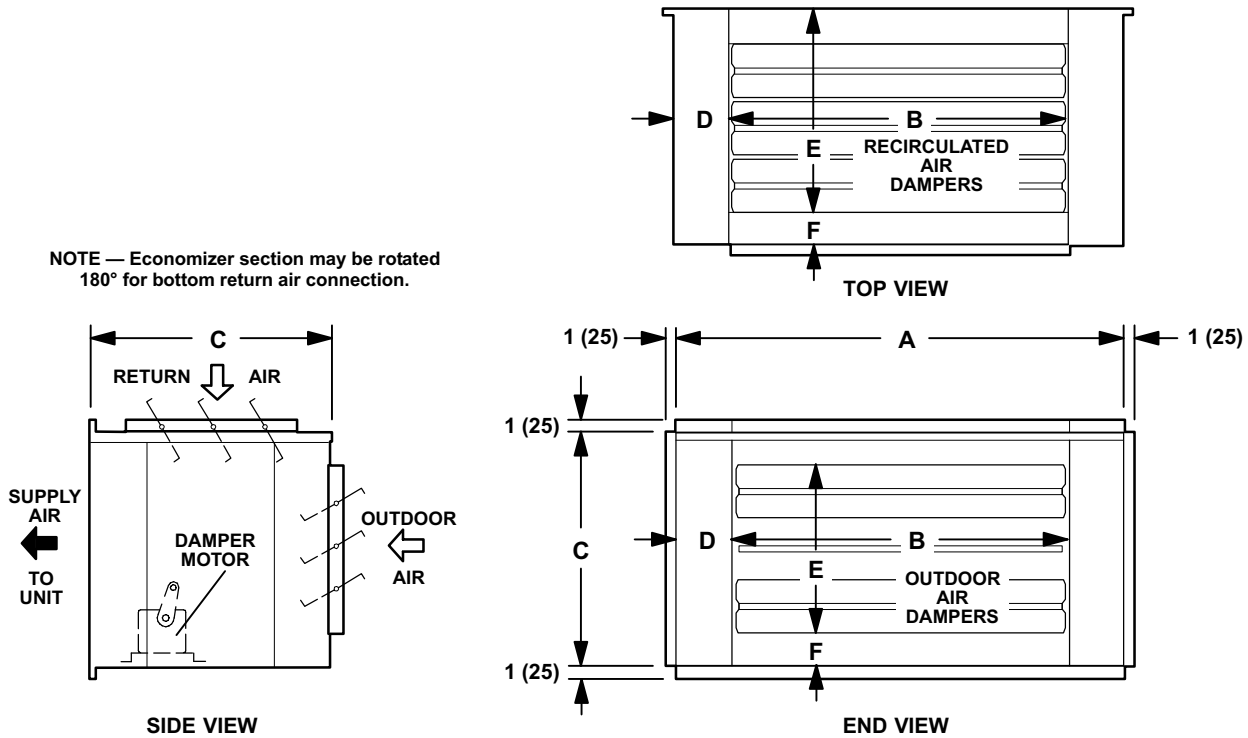
ACCESSORY DIMENSIONS - INCHES (MM)

CB17-00 SERIES EMPTY SPACER CABINETS



Model No.	A		B		C		D		E		F		G		H		J	
	in.	mm	in.	mm	in.	mm	in.	mm	in.	mm	in.	mm	in.	mm	in.	mm	in.	mm
CB17-95-00	52	1321	27	686	41-1/2	1054	25	635	50	1270	9-1/2	241	1	25	1	25	1	25
CB17-135-00	64	1626	27	686	53-1/2	1359	25	635	62	1575	9-1/2	241	1	25	1	25	1	25
CB17-185/275-00	85	2159	35	889	69	1753	33	838	70	1778	13	330	13	330	2	51	3	76

EMD17 SERIES ECONOMIZER DAMPERS

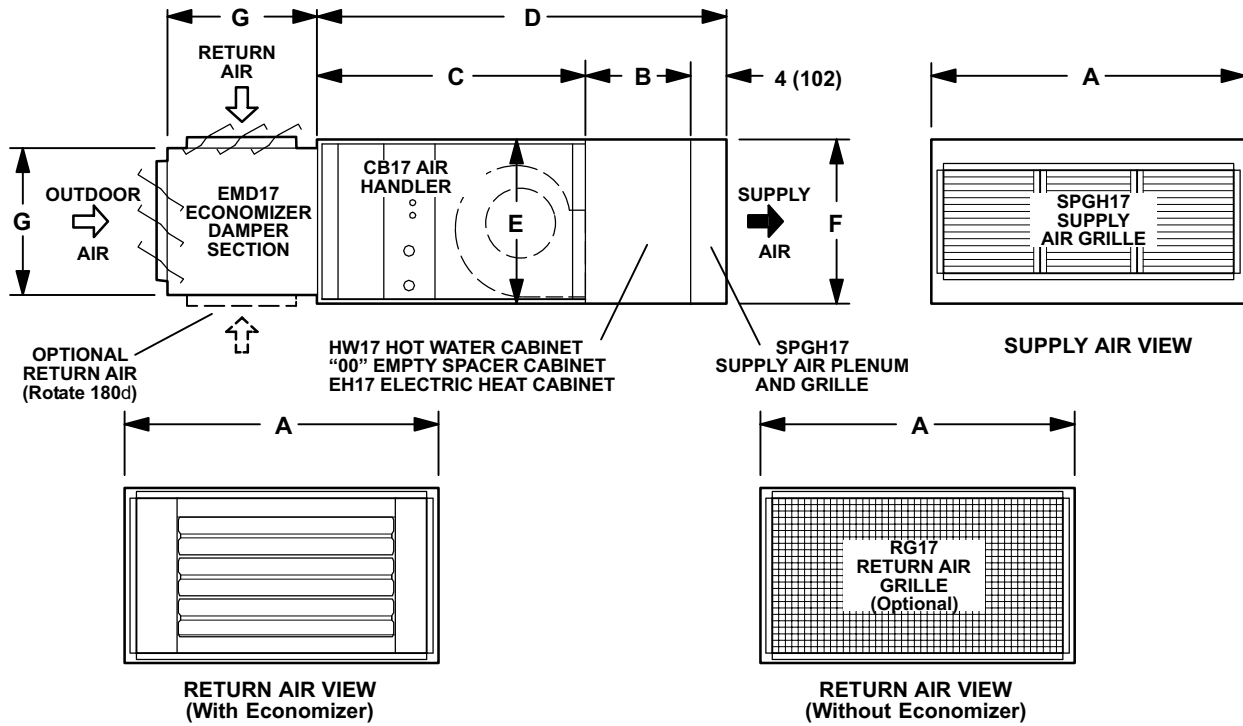


NOTE — Economizer section may be rotated 180° for bottom return air connection.

Model No.	A		B		C		D		E		F	
	in.	mm	in.	mm	in.	mm	in.	mm	in.	mm	in.	mm
EMD17-95	48	1219	36	914	25	635	6	152	18	457	3-1/2	89
EMD17-135	60	1524	48	1219	25	635	6	152	18	457	3-1/2	89
EMD17-185	83	2108	60	1524	33	838	11-1/2	292	24	610	4-1/2	114
EMD17-275	83	2108	60	1524	42	1067	11-1/2	292	30	762	6	152

ACCESSORY DIMENSIONS - INCHES (MM)

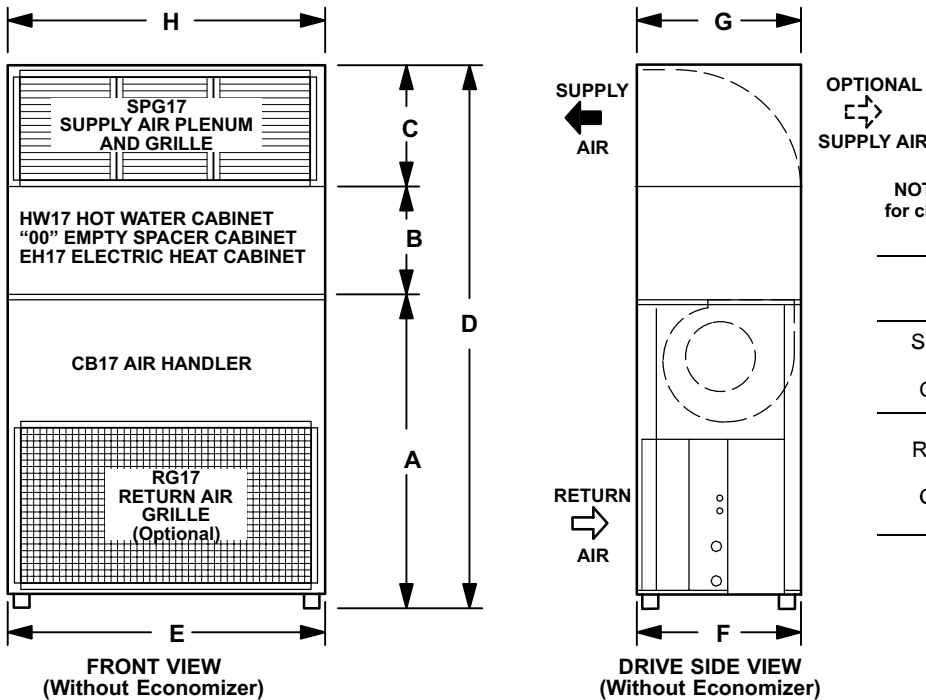
CBH17 HORIZONTAL MODELS WITH OPTIONAL ACCESSORY SECTIONS



	Model No.	A		B		C		D		E		F		G	
		in.	mm	in.	mm	in.	mm	in.	mm	in.	mm	in.	mm	in.	mm
Basic Unit	CBH17-95V	52	1321	---	---	36	914	---	---	27	686	---	---	---	---
	CBH17-135V	64	1626	---	---	36	914	---	---	27	686	---	---	---	---
	CBH17-185V	85	2159	---	---	44	1118	---	---	35	889	---	---	---	---
	CBH17-275V	85	2159	---	---	44	1118	---	---	44	1118	---	---	---	---
Electric Heat Section	EH17-95	52	1321	19	483	---	---	59	1499	---	---	27	686	---	---
	EH17-135	64	1626	19	483	---	---	59	1499	---	---	27	686	---	---
	EH17-185/275	85	2159	14	356	---	---	62	1575	---	---	35	889	---	---
Hot Water Coil	HW17-95	52	1321	14	356	---	---	54	1375	---	---	27	686	---	---
	HW17-135	64	1626	14	356	---	---	54	1375	---	---	27	686	---	---
	HW17-185/275	85	2159	14	356	---	---	62	1575	---	---	35	889	---	---
Spacer Cabinet	CBH17-95-00	52	1321	14	356	---	---	54	1375	---	---	27	686	---	---
	CBH17-135-00	64	1626	14	356	---	---	54	1375	---	---	27	686	---	---
	CBH17-185/275-00	85	2159	14	356	---	---	62	1575	---	---	35	889	---	---
Supply Air Ple-num and Grill	SPGH17-95	52	1321	---	---	---	---	---	---	---	---	27	686	---	---
	SPGH17-135	64	1626	---	---	---	---	---	---	---	---	27	686	---	---
	SPGH17-185/275	85	2159	---	---	---	---	---	---	---	---	35	889	---	---
Economizer Dampers	EMD17-95 or EMD17-135	---	---	---	---	---	---	---	---	---	---	---	---	25	635
	EMD17-95 or EMD17-135	---	---	---	---	---	---	---	---	---	---	---	---	25	635
	EMD17-185	---	---	---	---	---	---	---	---	---	---	---	---	33	838
	EMD17-275	---	---	---	---	---	---	---	---	---	---	---	---	42	1067

DIMENSIONS - INCHES (MM)

CB17 UP-FLOW MODELS WITH OPTIONAL ACCESSORY SECTIONS

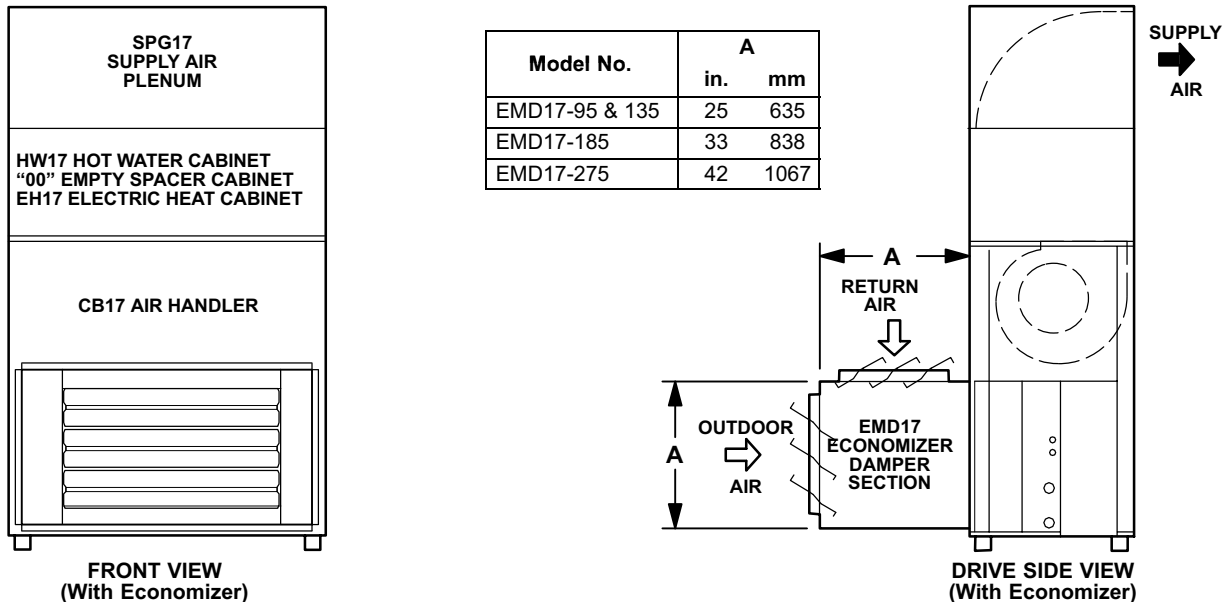


NOTE — Plenum may be rotated 180° for change in direction of discharge air.

Model No.		Grille Free Area	
		sq. ft.	m ²
Supply Air Grille	SPG17-95	4.5	0.42
	SPG17-135	5.6	0.52
	SG17-185/275	9.7	0.90
Return Air Grille	RG17-95	7.3	0.68
	RG17-135	9.0	0.84
	RG17-185	16.5	1.53
	RG17-275	21.2	1.97

Model No.		A		B		C		D		E		F		G		H	
		in.	mm	in.	mm	in.	mm	in.	mm	in.	mm	in.	mm	in.	mm	in.	mm
Basic Unit	CB17-95V	51-1/2	1308	---	---	---	---	---	---	52	1321	27	686	---	---	---	---
	CB17-135V	51-1/2	1308	---	---	---	---	---	---	64	1626	27	686	---	---	---	---
	CB17-185V	47	1194	---	---	---	---	---	---	85	2159	35	889	---	---	---	---
	CB17-275V	47	1194	---	---	---	---	---	---	85	2159	44	1118	---	---	---	---
Electric Heat Section	EH17-95	---	---	19	483	---	---	94-1/2	2400	---	---	---	---	27	686	52	1321
	EH17-135	---	---	19	483	---	---	94-1/2	2400	---	---	---	---	27	686	64	1626
	EH17-185/275	---	---	14	356	---	---	91	2311	---	---	---	---	35	889	85	2159
Hot Water Coil Section	HW17-95	---	---	14	356	---	---	89-1/2	2273	---	---	---	---	27	686	52	1321
	HW17-135	---	---	14	356	---	---	89-1/2	2273	---	---	---	---	27	686	64	1626
	HW17-185/275	---	---	14	356	---	---	91	2311	---	---	---	---	35	889	85	2159
Empty Spacer Cabinet	CB17-95-00	---	---	14	356	---	---	89-1/2	2273	---	---	---	---	27	686	52	1321
	CB17-135-00	---	---	14	356	---	---	89-1/2	2273	---	---	---	---	27	686	64	1626
	CB17-185/275-00	---	---	14	356	---	---	91	2311	---	---	---	---	35	889	85	2159
Supply Air Plenum & Grille	SPG17-95	---	---	---	---	24	610	---	---	---	---	---	---	27	686	52	1321
	SPG17-135	---	---	---	---	24	610	---	---	---	---	---	---	27	686	64	1626
	SPG17-185/275	---	---	---	---	30	762	91	2311	---	---	---	---	35	889	85	2159

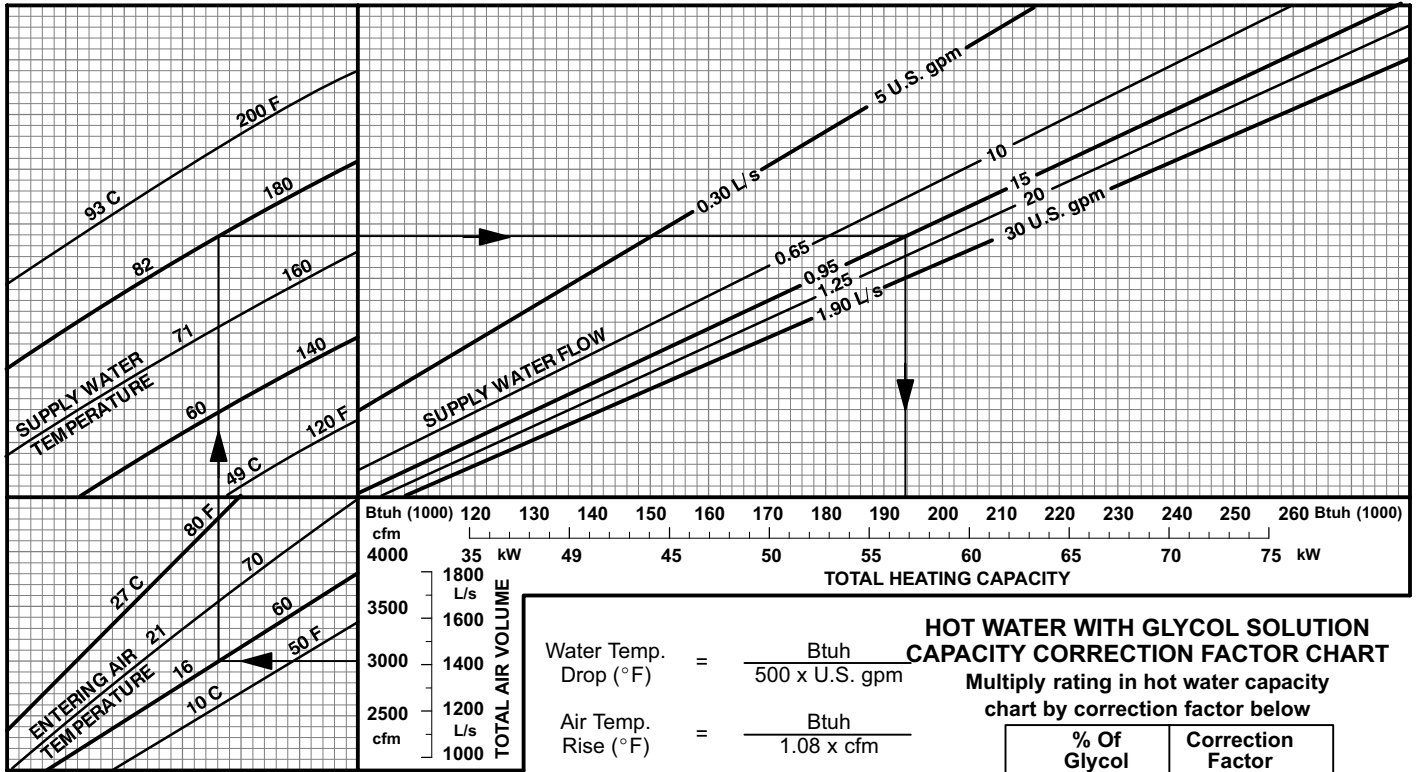
CB17 UP-FLOW MODELS WITH ECONOMIZER DAMPER SECTION



Model No.	A	
	in.	mm
EMD17-95 & 135	25	635
EMD17-185	33	838
EMD17-275	42	1067

HOT WATER HEATING CAPACITY

HW17-95 HOT WATER HEATING CAPACITY



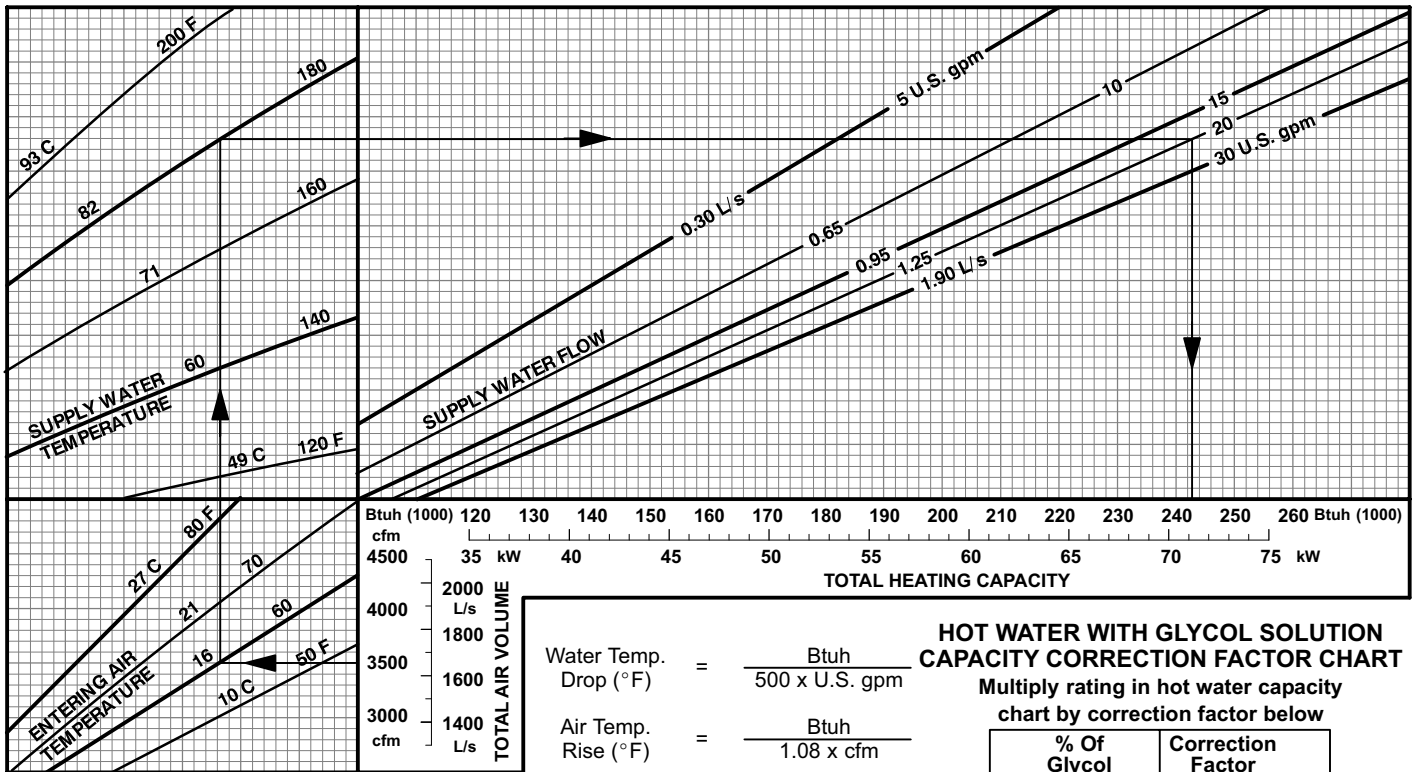
$$\text{Water Temp. Drop (}^\circ\text{F)} = \frac{\text{Btuh}}{500 \times \text{U.S. gpm}}$$

$$\text{Air Temp. Rise (}^\circ\text{F)} = \frac{\text{Btuh}}{1.08 \times \text{cfm}}$$

$$\text{Water Temp. Drop (}^\circ\text{C)} = \frac{\text{kW}}{4.19 \times \text{L/s (water)}}$$

$$\text{Air Temp. Rise (}^\circ\text{C)} = \frac{\text{kW}}{1210 \times \text{L/s (air)}}$$

HW17-135 HOT WATER HEATING CAPACITY



$$\text{Water Temp. Drop (}^\circ\text{F)} = \frac{\text{Btuh}}{500 \times \text{U.S. gpm}}$$

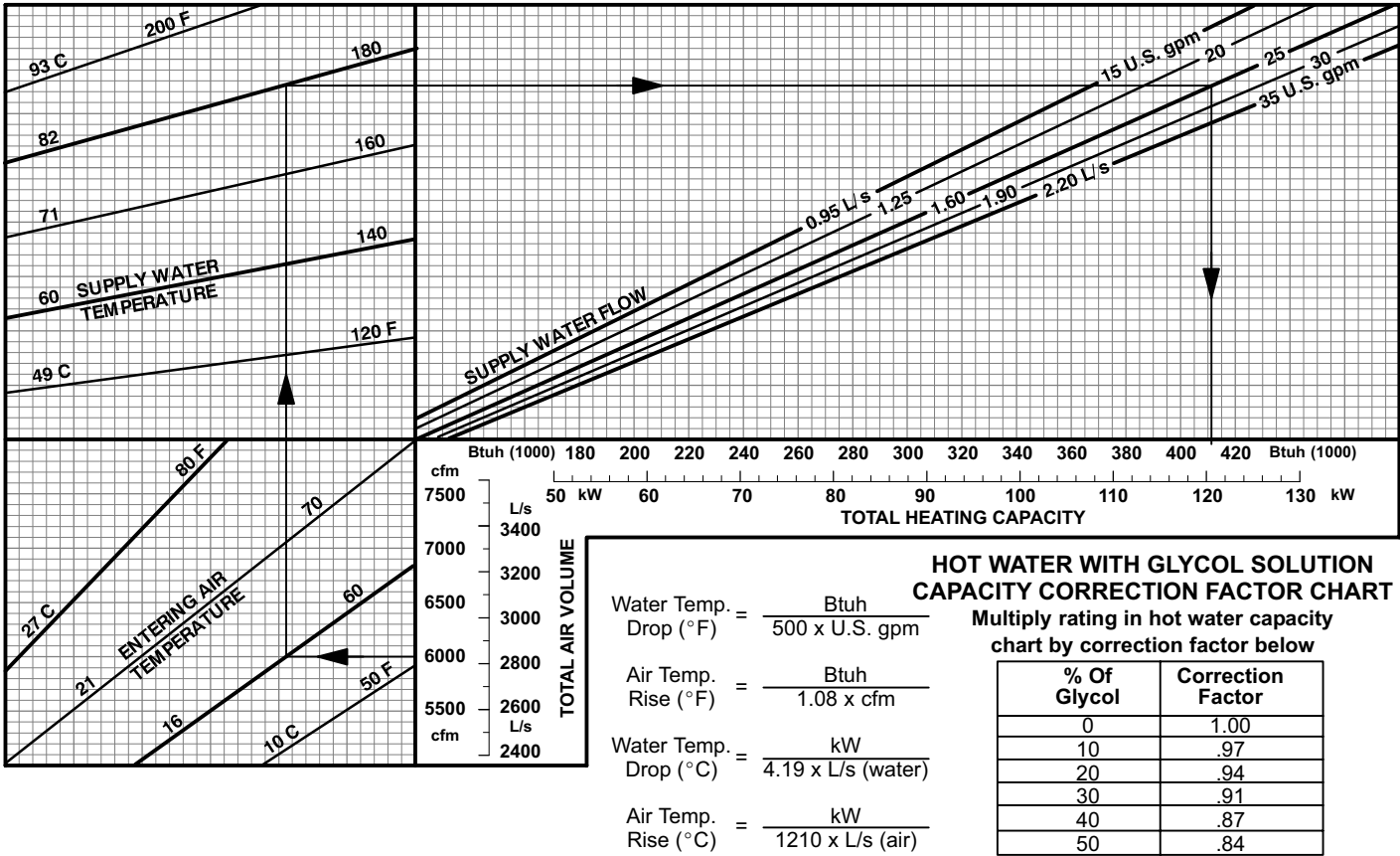
$$\text{Air Temp. Rise (}^\circ\text{F)} = \frac{\text{Btuh}}{1.08 \times \text{cfm}}$$

$$\text{Water Temp. Drop (}^\circ\text{C)} = \frac{\text{kW}}{4.19 \times \text{L/s (water)}}$$

$$\text{Air Temp. Rise (}^\circ\text{C)} = \frac{\text{kW}}{1210 \times \text{L/s (air)}}$$

HOT WATER HEATING CAPACITY

HW17-185/275 HOT WATER HEATING CAPACITY with CB17/CBH17-185V



HW17-185/275 HOT WATER HEATING CAPACITY with CB17/CBH17-275V

